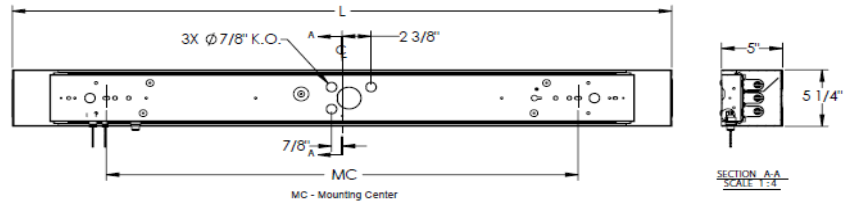


Designer Hospital Overbed Light



Features

White linen patterned acrylic front panel provides soft glow accent to this contemporary three lamp T8 wall mount senior care overbed light. The satin nickel trim accents identify the graceful shape. The Hudson overbed provides both ambient and task light with a 4-position pull switch, standard (120 volt only). Top and bottom diffuser are frosted white acrylic.



Construction

The ballast/wiring channel is formed from 22-gauge steel and is provided with keyhole mounting slots and wiring access. An internal divider provides separate lamp compartments for controlled up light and down light. Fixture can mount horizontally only. Power connections can be made in the fixture wiring channel or in a standard junction box (not included).

Finish

All parts are finished in satin nickel. Internal housing is finished in a lighting grade baked white enamel.

Diffuser

Diffuser is .110" thick matte white acrylic for the up and down light. White linen pattern acrylic front. Frame mounts to electrical channel with two decorative screws.

Electrical (Florescent)

This unit is wired with two UL listed electronic high power factor instant start ballasts for one up, two down T8 lamps at 120V-50/60 Hz AC operation. Four position, three circuit pull



21830 Kingsland Blvd-Suite 101A Katy TX 77450
P 713.706.4480 F 713.706.4161
www.msec.co

switch (on up, on down, on both, all off) are standard and located toward the right end. LED nightlight and on/off pull switch are included.

Lamping

For use with (3) T8 linear lamps, supplied by others.

Electrical (Led)

The unit is wired with two UL recognized LED Drivers. The shorter length fixtures produce 1350 source lumens upward, and 2700 down, while the longer fixtures provide 1800 source lumens upward and 3600 down. Four position pull switch (on up, on down, on both, all off) are standard and located near the right side of the fixture. LED nightlight with on/off control pull-switch is included.

Lamping

Fixture includes LED modules producing a total of 4050 or 5400 source lumens in 3000K CCT. Rated for 50,000 hours

Certification

All fixtures are cULus listed for damp locations.

FLORESCENT

Satin Nickel

8ENS523BZHAFX

8ENS233BZHAFX

Qty	Type
-----	------

3 F25T8

3 F32T8

H	L	D
---	---	---

5-1/4" 42-1/8" 5" 26-3/4"

5-1/4" 54-1/8" 5" 38-3/4"

LED

Satin Nickel

NSNE03L000424BZHAFX

NSNE03L004545BZHAFX

LED	Source Lumens
-----	---------------

36W 1350 up/2700 dn

45W 1800 up/3600 dn

H	L	D
---	---	---

5-1/4" 42-1/8" 5" 26-3/4"

5-1/4" 54-1/8" 5" 38-3/4"



21830 Kingsland Blvd-Suite 101A Katy TX 77450
P 713.706.4480 F 713.706.4161
www.msec.co