

Satin Nickel Contemporary Patient Room Overbed Light

Features:

Bold geometric lines accent this contemporary three lamp T* wall mount senior care overbed light. It has extruded aluminum rails in satin aluminum finish provides both ambient and task light with a four way pull switch, standard (120 volt only) Top, bottom and front diffuser is frosted white acrylic.



Construction:

The ballast/ wiring channel is formed from 22-gauge steel and is provided with keyhole mounting slots and wiring access. An internal divider provides separate lamp compartments for controlled up light and downlight. The decorative bands are 0.060" thick extruded aluminum. Fixture can mount horizontally only. Power connections can be made in fixture wiring channel or in a standard junction box (not included).

Finish:

All metal parts are finished in plated stain aluminum. Internal housing is finished in a lighting grade baked white enamel.

Diffuser:

Diffuser is 0.070" thick matte white acrylic. Diffuser is mounted to extruded bands and vertical bars. Frame mounts to electrical channel with two decorative screws.

Electrical (Florescent):

This mount is wired with two UL listed electronic high-power factor instant start ballasts for one up, two down T* lamps at 120V- 50/60 Hz AC operation. Four position, three circuit pull switch (on up, on down, on both, all off) are standard and located toward the right end. LED nightlight and on/off pull switch included.

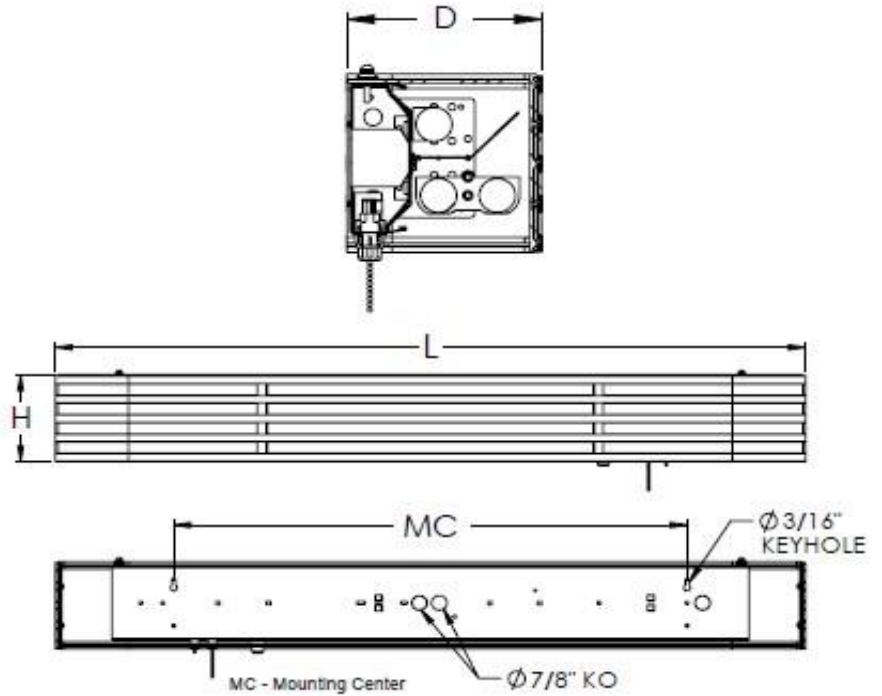
Lamping:

For use with (3) T8 linear lamps, not included.



Electrical (LED):

This unit is wired with two UL recognized LED Drivers. The shorter length fixtures produce 1350 source lumens upward, and 2700 down, while the longer fixtures provide 1800 source lumens upward and 3600 down. Four position pull switch (on up, on down, on both, all off) are standard and located near the right side of the fixture. LED nightlight with on/off control pull switch is included.



Lamping:

Fixture includes LED modules producing a total of 4050 or 5400 source lumens in 3000K CCT. Rated for 50,000 hours

Certification:

All fixtures are cULus listed for damp locations.

Options:

120-277 universal voltage available without switch and nightlight

Ordering Specifications:

FLORESCENT

Satin Aluminum	Qty	Lamp	H	L	D	MC
8EAS523BBBAFX	3	F25T8	5-1/4"	43"	5-5/8"	29-1/8"
8EAS233BBBAFX	3	F32T8	5-1/4"	55"	5-5/8"	41-1/8"

LED

Satin Aluminum	LED	Source Lumens	H	L	D	MC
ASNE03L000434BBBAFX	36W	1350 up/2700 down	5-1/4"	43"	5-5/8"	29-1/8"
ASNE03L004555BBBAFX	45W	1800 up/3600 down	5-1/4"	55"	5-5/8"	41-1/8"





Toll Free 1.877.706.4480 | Local/ International 713.706.4480 | Fax 713.706.4161
www.MSEC.co