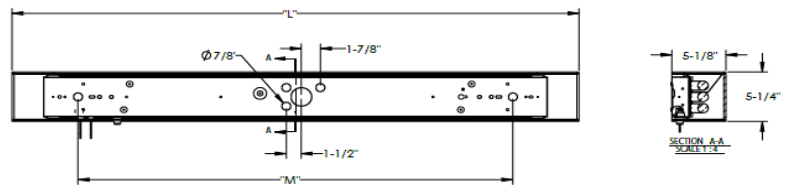


Sleek Contemporary Overbed Light

Features:

These are institutional bed light fixtures which allow individual control of light output. The fixture is equipped with a night light and dual ballasts to enable flexible switching. Switching options are either a 4-position switch or a wall switch field wired to the top lamp and an on/off pull switch wired to bottom lamps(s). The fixture is available in Faux Alabaster in 3' or 4' lengths.



Construction:

The housing is die formed from 22-gauge steel and is provided with standard mounting holes and wiring access.

Finish:

Housing is finished in lighting grade white baked gloss enamel paint. Decorative frame is made from Faux Alabaster acrylic.

Diffuser:

The front diffuser is made of cast acrylic .22" thick and is glued to upper and lower diffusers. The upper diffuser is made of clear acrylic, .110" thick and is frosted on the inside. The lower diffuser is made from white acrylic and is .09" thick. Frame is held in place by two thumbscrews from the topside.

Electrical (Fluorescent):

This unit is wired with two UL listed electronic high-power factor instant start ballasts for one up, two down T8 lamps at 120V- 50/60 Hz AC operation. Four position, three circuit pull switch (on up, on down, on both, all off) are standard and located toward the right end. LED nightlight and on/off pull switch is included.



Lamping:

For use with 3/25 or 3/32Watt T8 linear fluorescent lamps; supplied by others.

Electrical (LED):

The unit is wired with two UL recognized LED Drivers. The shorter length fixtures produce 1350 source lumens upward, and 2700 down, while the longer fixtures provide 1800 source lumens upward and 3600 down. Four position pull switch (on up, on down, on both, all off) are standard and located near the right side of the fixture. LED nightlight with on/off control pull-switch is included

Lamping:

Fixture includes LED modules producing a total of 4050 or 5400 source lumens in 3000K CCT. Rated for 50,000 hours

Certification:

Fixture includes LED modules producing a total of 4050 or 5400 source lumens in 3000K CCT. Rated for 50,000 hours

Options:

120-277V universal voltage available without switch and nightlight.

FLORESCENT

Model No.	Qty	Type	H	L	D	MC
8ELA523BLPAFX	3	F25T8	5-1/4"	42-1/4"	5-1/8"	29-1/2"
8ELA233BLPAFX	3	F32T8	5-1/4"	54-1/4"	5-1/8"	41-1/2"

LED

Model No.	LED	Source Lumens	H	L	D	MC
NE03L000424BLPAFX	36W	1350 up/2700 dn	5-1/4"	42-1/4"	5-1/8"	29-1/2"
NE03L004545BLPAFX	45W	1800 up/3600 dn	5-1/4"	54-1/4"	5-1/8"	41-1/2"

